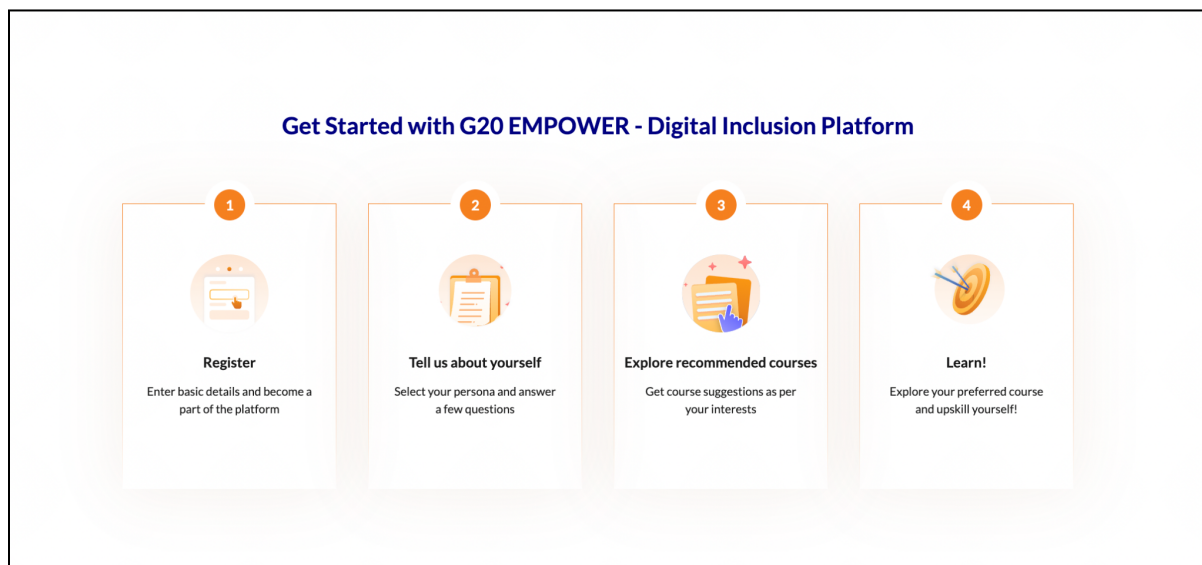


Annexure: Step-by-step guide to G20 EMPOWER Digital Inclusion platform

1. Simple steps to register



Snapshot of the steps to arrive at the user's personalized learning course

- Open the link <https://techequity.g20empower.com/>
- As a new participant, click 'Register Now'
- Fill in the details asked in the registration form
 - Add your Name, Mobile phone/ Email address, State/ Province, Country
 - Select your preferred language from the drop-down, enter your Date of Birth, Gender
 - Complete the Human verification check, by clicking on the checkbox
 - Click 'Send Verification Code' to get an OTP (One-time password) on the Mobile phone/ Email address added in the form
 - In the next screen, enter the OTP received on your Mobile Phone/ Email, and click the button 'Verify & Register'. This completes your registration.



वसुधैव कुटुम्बकम्
ONE EARTH • ONE FAMILY • ONE FUTURE



2. Choose a persona

Now you may click on the 'Choose a Persona' button to select a persona that best explains your current profession/ working status.



Snapshot of sample personas

3. Answer the survey questions

The user is asked a few simple survey questions which will help her to arrive at a course of her choice. The user can answer the questions through the radio button options available and click on the 'Submit' button.

Help us know you better

Answer the questions below to help us recommend courses as per your interests

Select the fields of your interest (You may choose multiple options) *

Select...

Please rate your proficiency in the selected field(s) of interest? *

Select...

Select your language preference for the courses (You may choose multiple options) *

Select...

CONTINUE

Help us know you better

Answer the questions below to help us recommend courses as per your interests

Select the topics and/or skills that you are interested in (You may choose multiple options) *

Select...

Select your field of work.

Select...

Select the role that you fit in professionally.

Select...

GO BACK **RECOMMEND COURSES** **RESET MY ANSWERS** **SKIP**

Snapshot of the Survey Questions

4. Choose a course

The platform will provide a few course suggestions, from which you can choose the best course suitable for you. Click on the 'Enroll' button to start the learning journey.

My Dashboard

COURSES RECOMMENDED | MY LEARNING JOURNEY | COURSES ADDED TO MY LIST

- Artificial Intelligence around us**
 Begin your AI learning journey by understanding the fundamentals of Artificial Intelligence. Starting with how technology has changed the world, we would move towards what is Artificial Intelligence a...
 1 language | 15 min | Digital Literacy
- Ethical concerns around AI**
 Believe it or not, Artificial Intelligence has slowly crept into our lives and has become an integral part of it. But is it all beneficial to us or does it possess any hidden threats too? Get to know...
 1 language | 20min | Digital Literacy
- Impact of AI on Healthcare and Transportation**
 Experience the diverse nature of Artificial Intelligence as you explore its applications in various industries in today's time. Have a look at how AI is playing a vital role in solving the problems of...
 1 language | 10 min | Digital Literacy

← Back to courses

Introduction to Artificial Intelligence | Artificial Intelligence around us

Explore the foundations of AI, from its impact on the world to its origins, and discover its current influence on our lives while debunking common misconceptions. Begin your AI learning journey today!

Artificial Intelligence | Machine Learning | Deep Learning | AI Applications | Emerging Technology

Approximate Duration: **15 min** | Difficulty Level: **Basic** | Available languages (1): **English** | Category: **Digital Literacy**

GO TO COURSE

Snapshot of a few sample course suggestions



वसुधैव कुटुम्बकम्
ONE EARTH • ONE FAMILY • ONE FUTURE



Selected course options, best suited to the registered user, will be visible. The user can choose a course option to enrol and start the learning journey.

5. On completion of course

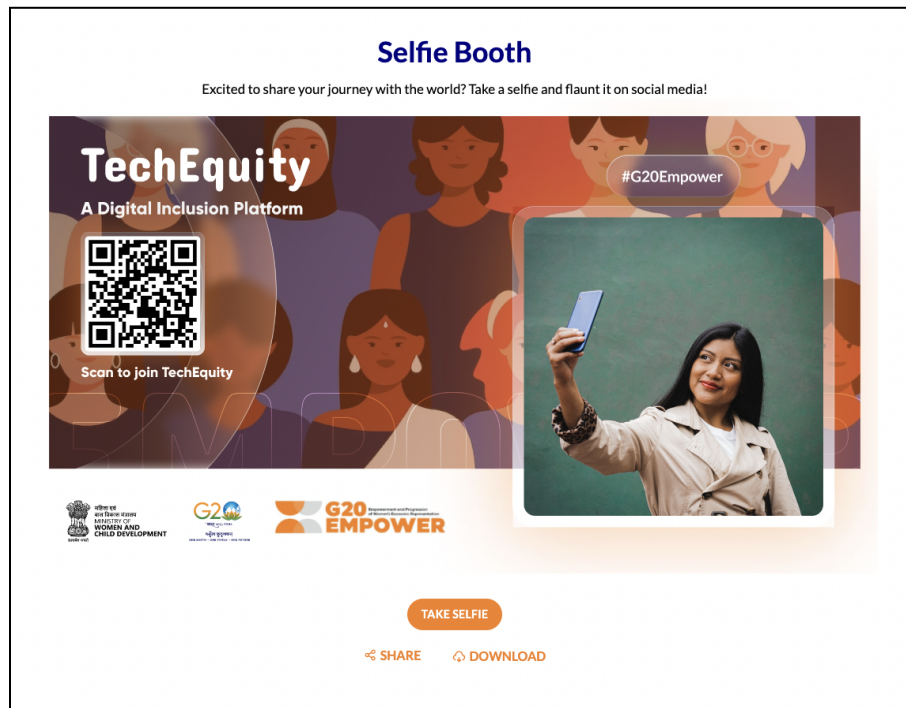
On completion of the course of choice, the participants will receive a personalized badge/ e-certificate that can be shared on social media. The badges will have the logos of all the partners and the name of the participant.



Sample Personalized downloadable 'Digital Badges'

5. Additional Feature - Selfie Booth

Users can navigate to the Selfie Booth feature on the platform to take a picture of themselves and share their learning journey with their networks on message or social media.



TechEquity Selfie Booth